



The City | Art



PURPLE HAZE James Turrell's "Aren Reign" will transform the rotunda of the Guggenheim with LED light and daylight.

Light Show

While other artists try to capture the effects of light, **James Turrell** uses it as a medium—cutting ceilings, placing mirrors and digging into the earth to direct its rays. Beginning June 21, the Guggenheim will host a large-scale retrospective of his work, featuring a new site-specific work called "Aren Reign" that will transform the museum into a brilliant oasis. It's a unique marriage between the artist and museum architect Frank Lloyd Wright. "Wright himself was no lover of cities, and thought of the Guggenheim as a place where people could temporarily escape the urban environment, stepping inside to greet the light of nature," says curator Nat Tretman. "Turrell's attraction to the space is not coincidental; he has taken advantage of this aspect of the museum to create a space where people can settle into a contemplative space and momentarily forget the hustle and bustle of the city." Through Sept. 25. 1071 Fifth Ave., guggenheim.org —*Heather Corcoran*



STUDIO APARTMENT | Donald Judd, 101 Spring Street, New York, First Floor, 1910

Spring Fever

When **Donald Judd** purchased the five-story, cast-iron building at 101 Spring Street for his home and studio in 1966, he set to work cementing his legacy on his own terms. The building, where the iconic artist lived until his death in 1994, is home to a Judd-curated permanent installation of more than 1,000 works of art, including some by his minimalist (a classification he reportedly hated) contemporaries Carl Andre and Dan Flavin. Now, after a three-year restoration, the Judd Foundation is opening the reservations line for guided tours on June 3, the 85th anniversary of the artist's birth. juddfoundation.org —*HC*



EN PLEIN AIR From top: Summer's outdoor exhibitions include colossal sculptures by Ugo Rondinone; Alex Israel's self-portrait on the Bowery.

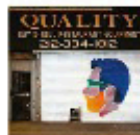
Outsider Art

The city's art scene is in full bloom with a host of outdoor exhibitions and artwork, just in time for summer. —*HC*

Ugo Rondinone, "Human Nature"

Rondinone's colossal humanoid figures (above) will reside in Rockefeller Plaza through July 7. Between 48th and 56th streets, publicartfund.org

feet of reclaimed rope coil throughout the park. Through Sept. 8. Madison Square Park, madisonsquarepark.org/art



Paul McCarthy, "Sisters"

With a massive (and rotated) Armory exhibition and a slate of gallery shows, this summer is McCarthy's season. The cheeky artist adds to his oeuvre with "Sisters," a monumental bronze statue inspired by Snow White. Through July 26. Hudson River Park at West 17th Street, hudsonriverpark.com

After Hours 2

For the second summer, The Art Production Fund has commissioned artists—15 in all, including Alex Israel (above), Sylvie Fleury, Wendy White and Daniel Buren—for an after-hours-only exhibition along the Bowery's restaurant-supply row. Through Sept. 28. Bowery between East Houston and Grand Street, artproductionfund.org

Thomas Schütte, "United Enemies"

Based on his small clay figurines, the German artist's abstract bronze figures tower ominously over the southeast corner of Central Park. Through Aug. 25. East 60th Street at Fifth Avenue, publicartfund.org

Carol Bove, "Caterpillar"

Before the final leg of the High Line opens, see the untamed terrain during an exhibition of large-scale sculptures. Reservations required for free tours. Through May 2014. High Line between West 30th and 34th streets, thehighline.org

Orly Genger, "Red, Yellow and Blue"

Waves made from more than 1.4 million

PHOTO: TURRELL © JAMES TURRELL; PANDORINI © ARTS FOR THE BOWERY; RONDINONE © UGO RONDINONE; ISRAEL © ALEX ISRAEL; FLEURY © PAUL MCCARTHY; SCHÜTTE © THOMAS SCHÜTTE; BOVE © CAROL BOVE; GINGER © ORLY GINGER; JUDG © DONALD JUDG; ALL RIGHTS RESERVED BY ART PRODUCTION FUND. 97-09866 PAUL KATE COMPTON PHOTOGRAPHY AND FOUNDATION LICENSED BY NYU, NEW YORK